

# Erie County Mental Health Treatment Racial Equity Analysis [2023]

Alan M. Delmerico, PhD

John Petrocelli, BS

Scott Martin, BS

Institute for Community Health Promotion  
Center for Health and Social Research  
SUNY Buffalo State University  
1300 Elmwood Ave  
Buckham Hall A100  
Buffalo, NY 14222-1095  
Telephone: 878-6137  
E-mail: [delmeram@buffalostate.edu](mailto:delmeram@buffalostate.edu)



CENTER *for* HEALTH  
*and* SOCIAL RESEARCH

INSTITUTE FOR COMMUNITY HEALTH PROMOTION

---

BUFFALO STATE • The State University of New York

# Table of Contents

	Page
<b>Racial Equity Analysis Overview</b>	<b>3</b>
<b>Maps of Treatment Program Coverage with Demographic Characteristics:</b>	
<b>Figure 1.1: MH Program Coverage Gaps in the City of Buffalo by Race/Ethnicity (Within 1 Mile)</b>	<b>7</b>
<b>Figure 1.2: MH Program Coverage Gaps in the City of Buffalo by Poverty (Within 1 Mile)</b>	<b>8</b>
<b>Figure 2.1: Outpatient MH Program Coverage Gaps in the City of Buffalo by Race/Ethnicity (Within 1 Mile)</b>	<b>9</b>
<b>Figure 2.2: Outpatient MH Program Coverage Gaps in the City of Buffalo by Poverty (Within 1 Mile)</b>	<b>10</b>
<b>Figure 3.1: MH Program Coverage Gaps in Erie County Excluding Buffalo by Race/Ethnicity (Within 10 Miles)</b>	<b>11</b>
<b>Figure 3.2: MH Program Coverage Gaps in Erie County Excluding Buffalo by Poverty (Within 10 Miles)</b>	<b>12</b>
<b>Figure 4.1: Outpatient MH Program Coverage Gaps in Erie County Excluding Buffalo by Race/Ethnicity (Within 10 Miles)</b>	<b>13</b>
<b>Figure 4.2: Outpatient MH Program Coverage Gaps in Erie County Excluding Buffalo by Poverty (Within 10 Miles)</b>	<b>14</b>
<b>Tables of Demographic Characteristics of Populations With/Without Treatment Coverage:</b>	
<b>Table 1.1: Basic Demographic Profile for Populations in Mental Health Program Coverage (All Types, Within 1 Mile, City of Buffalo Only)</b>	<b>15</b>
<b>Table 1.2: MH Program Coverage (All Types, Within 1 Mile, City of Buffalo Only): Percent of Each Race/Ethnicity Category as a Proportion of the Total Population In Coverage and Not in Coverage</b>	<b>15</b>
<b>Table 1.3: MH Program Coverage (All Types, Within 1 Mile, City of Buffalo Only): Percent of In Coverage and Not in Coverage Groups as a Proportion of the Total Population in Each Race/Ethnicity Category</b>	<b>16</b>
<b>Table 2.1: Basic Demographic Profile for Populations in Outpatient Mental Health Program Coverage (Within 1 Mile, City of Buffalo)</b>	<b>17</b>

<b>Table 2.2: Outpatient MH Program Coverage (Within 1 Mile, City of Buffalo): Percent of Each Race/Ethnicity Category as a Proportion of the Total Population In Coverage and Not in Coverage</b>	<b>17</b>
<b>Table 2.3: Outpatient MH Program Coverage (Within 1 Mile, City of Buffalo): Percent of in Coverage and Not in Coverage Groups as a Proportion of the Total Population in Each Race/Ethnicity Category</b>	<b>18</b>
<b>Table 3.1: Basic Demographic Profile for Populations in Mental Health Program Coverage (All Types, Within 10 Miles, Erie County Excluding Buffalo)</b>	<b>19</b>
<b>Table 3.2: MH Program Coverage (All Types, Within 10 Miles, Erie County Excluding Buffalo): Percent of Each Race/Ethnicity Category as a Proportion of the Total Population In Coverage and Not in Coverage</b>	<b>19</b>
<b>Table 3.3: MH Program Coverage (All Types, Within 10 Miles, Erie County Excluding Buffalo): Percent of In Coverage and Not in Coverage Groups as a Proportion of the Total Population in Each Race/Ethnicity Category</b>	<b>20</b>
<b>Table 4.1: Basic Demographic Profile for Populations in Outpatient Mental Health Program Coverage (Within 10 Miles, Erie County Excluding Buffalo)</b>	<b>21</b>
<b>Table 4.2: Outpatient MH Program Coverage (Within 10 Miles, Erie County Excluding Buffalo): Percent of Each Race/Ethnicity Category as a Proportion of the Total Population In Coverage and Not in Coverage</b>	<b>21</b>
<b>Table 4.3: Outpatient MH Program Coverage (Within 10 Miles, Erie County Excluding Buffalo): Percent of In Coverage and Not in Coverage Groups as a Proportion of the Total Population in Each Race/Ethnicity Category</b>	<b>22</b>
<b>Mental Health Racial Equity Analysis Results</b>	<b>23</b>

## Race Equity Analysis Overview

The Race Equity Analysis for Mental Health Treatment Services in Erie County is designed to assess the coverage of the treatment system as a whole and to describe the race/ethnicity and poverty characteristics of the populations near to and further from these service locations. The goal is to better understand if, and where, there are gaps in the coverage of these resources and the characteristics of populations affected by these gaps. Specifically, this analysis uses the locations of treatment services and examines the demographic characteristics of the populations that fall inside of and outside of the physical catchment areas of these locations. A catchment area is defined as the area from which a location, such as a service or institution, attracts a population that uses its services. In the case of this report, we define a catchment area as a 1- or 10-mile radius surrounding a mental health program or service, depending on whether that program is within the City of Buffalo or outside of Buffalo. The analyses of treatment system coverage are conducted separately based on these definitions, with one set of analyses focused on the City of Buffalo only, using the 1-mile radius definition, while the other is focused on Erie County excluding the City of Buffalo, using the 10-mile radius definition. These catchment area definitions for physical program locations were created by the U.S. Department of Agriculture Economic Research Service through research on food access in order to define food deserts. These definitions are well suited for use in this analysis to describe deficits in physical access to important physical resources, in this case, treatment service locations.

These analyses are focused on identifying the locations within the county that are outside of the catchment areas of programs within the treatment system which suggest more limited physical accessibility to these resources. Throughout the document, locations that fall within these catchment areas will be described as being “In Coverage” of the physical treatment locations, while locations that fall outside of these catchment areas will be described as being “Not In Coverage” of the physical treatment locations. Maps showing these measures of coverage were derived by creating straight line distance buffers around the geocoded treatment program locations for both Erie County excluding Buffalo and the City of Buffalo only. These locations included programs from neighboring counties if they were within 10 miles of the Erie County border. Please note that these analyses do not reflect the availability of telehealth and remote service delivery which may impact the coverage of some services and have been especially relevant for the system of care throughout the COVID-19 pandemic. Additionally, these analyses represent only the Euclidean (straight-line) distance measures for physical access to the system locations and do not reflect the variable levels of transportation and economic access to these resources for the populations throughout the county.

In order to conduct this analysis, first, the distribution of treatment services was evaluated by compiling information about all certified NYS Office of Mental Health (OMH) treatment programs and their locations through the OMH website<sup>1</sup>. Next, circular buffers based on the catchment areas defined above were applied to each location. Maps depicting the race/ethnicity characteristics of locations that did not fall within any treatment catchment area are presented in this report with data at the Census Block level, the smallest enumeration unit available with this information, using data from the 2020 Decennial Census<sup>2</sup>. Similarly, data on rates of poverty in locations outside of these catchment areas are depicted in

---

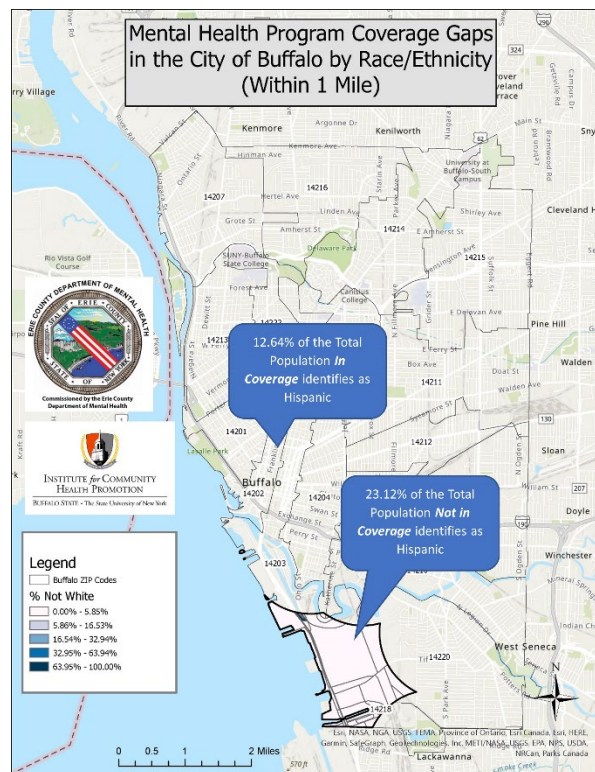
<sup>1</sup> Current as of May 25, 2023

<sup>2</sup> U.S. Census Bureau, 2020 Census Redistricting Data (Public Law 94-171). Retrieved from <https://data.census.gov/cedsci/table?y=2020&d=DEC%20Redistricting%20Data%20%28PL%2094-171%29>

maps in this report, however, these data use Census ACS measures<sup>3</sup> and are only available at units of analysis larger than Census Blocks, with Census Tracts used here. In addition to the maps, summary tables of demographic characteristics are presented which depict more detailed race/ethnicity characteristics of the aggregated populations inside and outside of the catchment areas.

The demographic characteristics of the populations that are inside and outside of program coverage areas (as defined by the catchment areas) are compared in two ways:

1. Proportions of the *total population* within each of the In Coverage and Not In Coverage groups are presented by each race and ethnicity category, as defined by the US Census
  - a. For example, you might want to know what proportion of the total population within the coverage area of program locations are comprised of a specific population group (e.g. Hispanics) which can then be compared to the proportion of this same population group within the total population of those who are not within the coverage area of program locations. In this example, we might find that the Hispanic population for the In Coverage group represent 12.64% of the total population In Coverage while the Hispanic population group makes up 23.12% of the total population of the Not In Coverage group. The figure below illustrates this example.
2. Proportions of populations *within each race and ethnicity category*, as defined by the US Census, are presented for In Coverage and Not In Coverage groups



<sup>3</sup> U.S. Census Bureau (2020). *Poverty Status in The Past 12 Months of Families By Family Type By Presence Of Related Children Under 18 Years By Age Of Related Children, 2015-2019 American Community Survey 5-Year Estimates*. Retrieved from <https://data.census.gov/cedsci/table?q=ACS%20B17010&tid=ACSDT5Y2019.B17010>

- a. For example, you might want to know what proportion of a population group (e.g. Hispanics) are in within the coverage area of program locations compared to the proportion of this same population group that are not within the coverage area of program locations. In this example, we might find that among the total Hispanic population, 99.84% fall within the In Coverage group while the remaining 0.16% of this population category falls within the Not In Coverage group. The figure below illustrates this example.





# Maps of Treatment Program Coverage with Demographic Characteristics

Figure 1.1

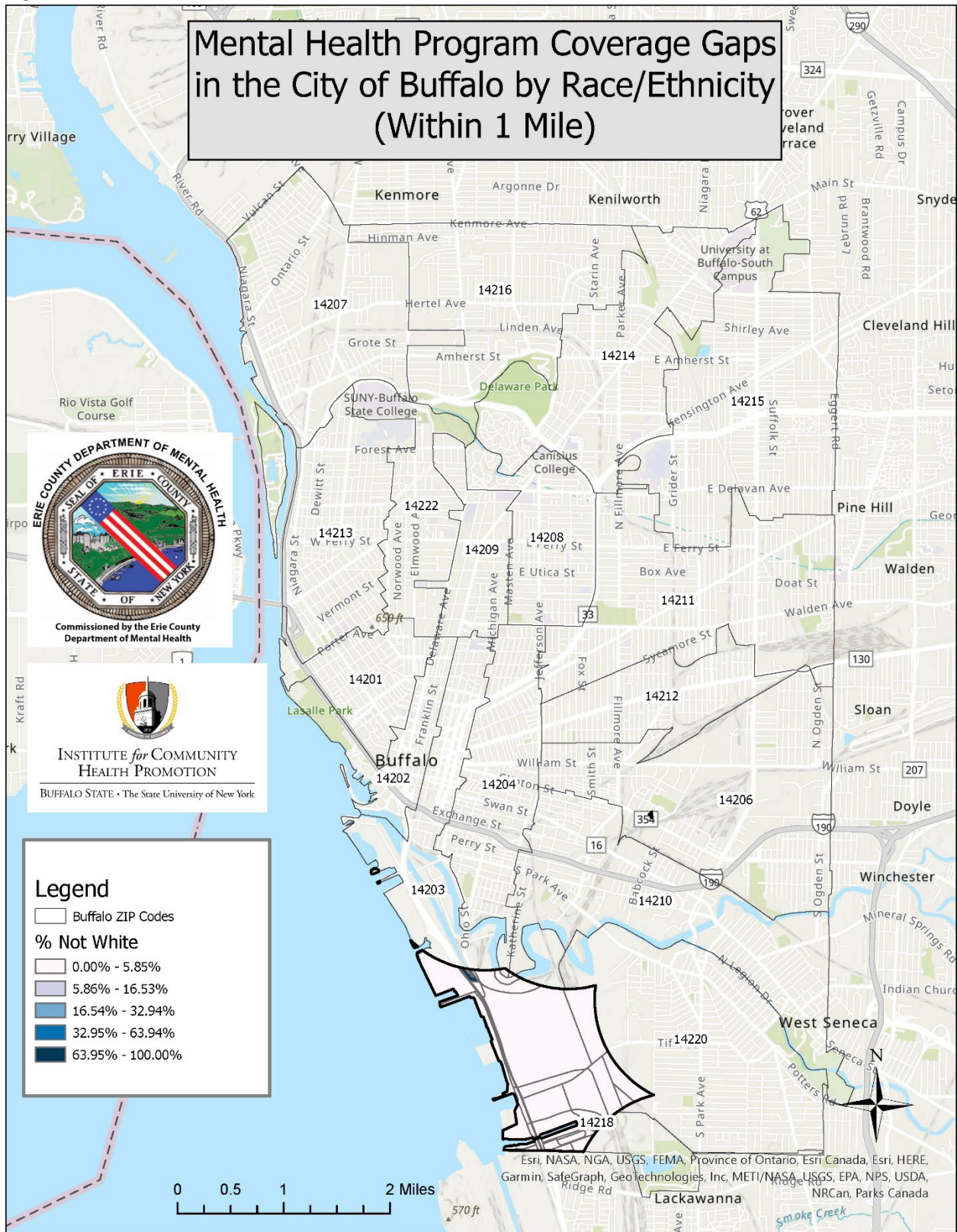






Figure 2.1







Figure 3.1

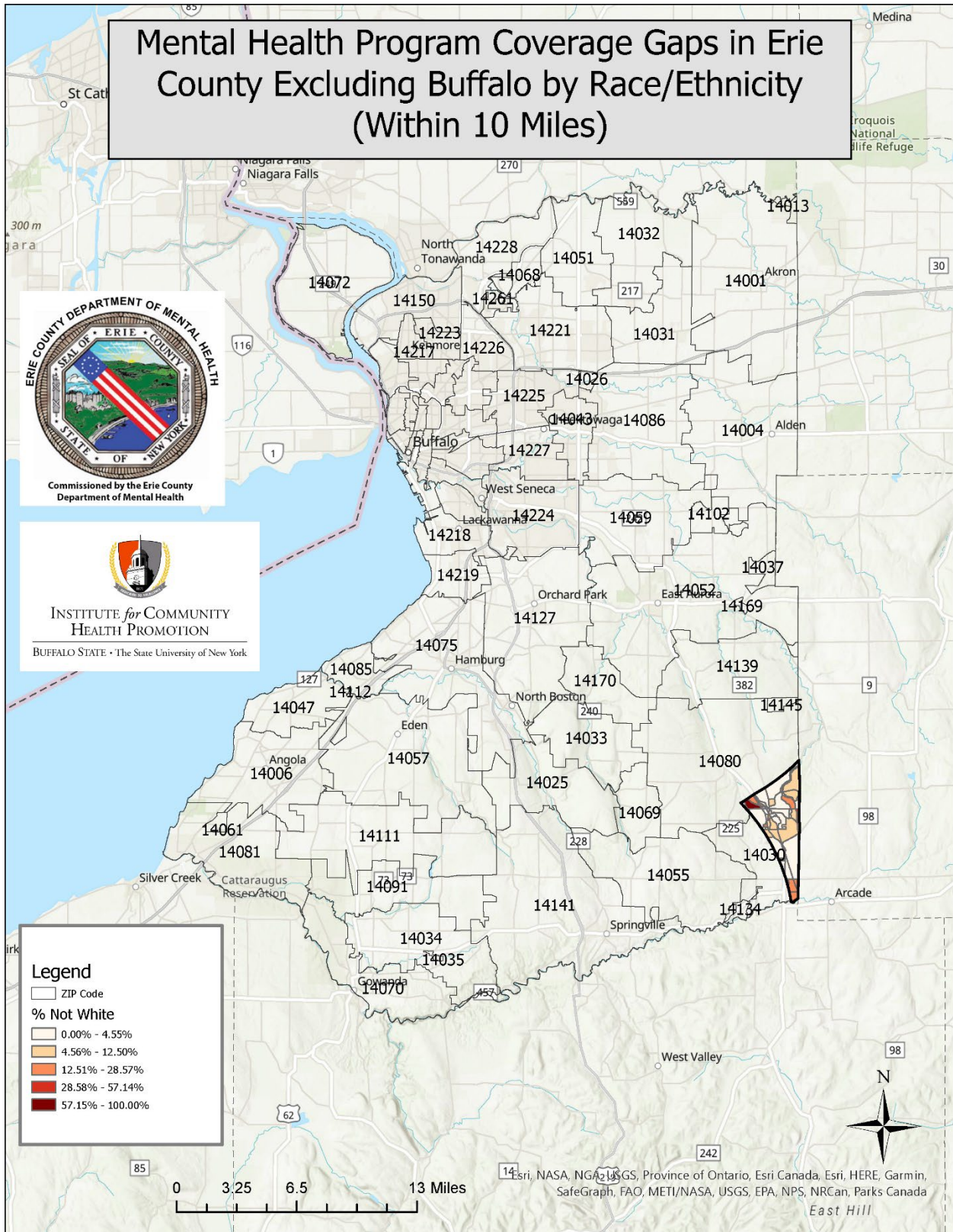




Figure 3.2

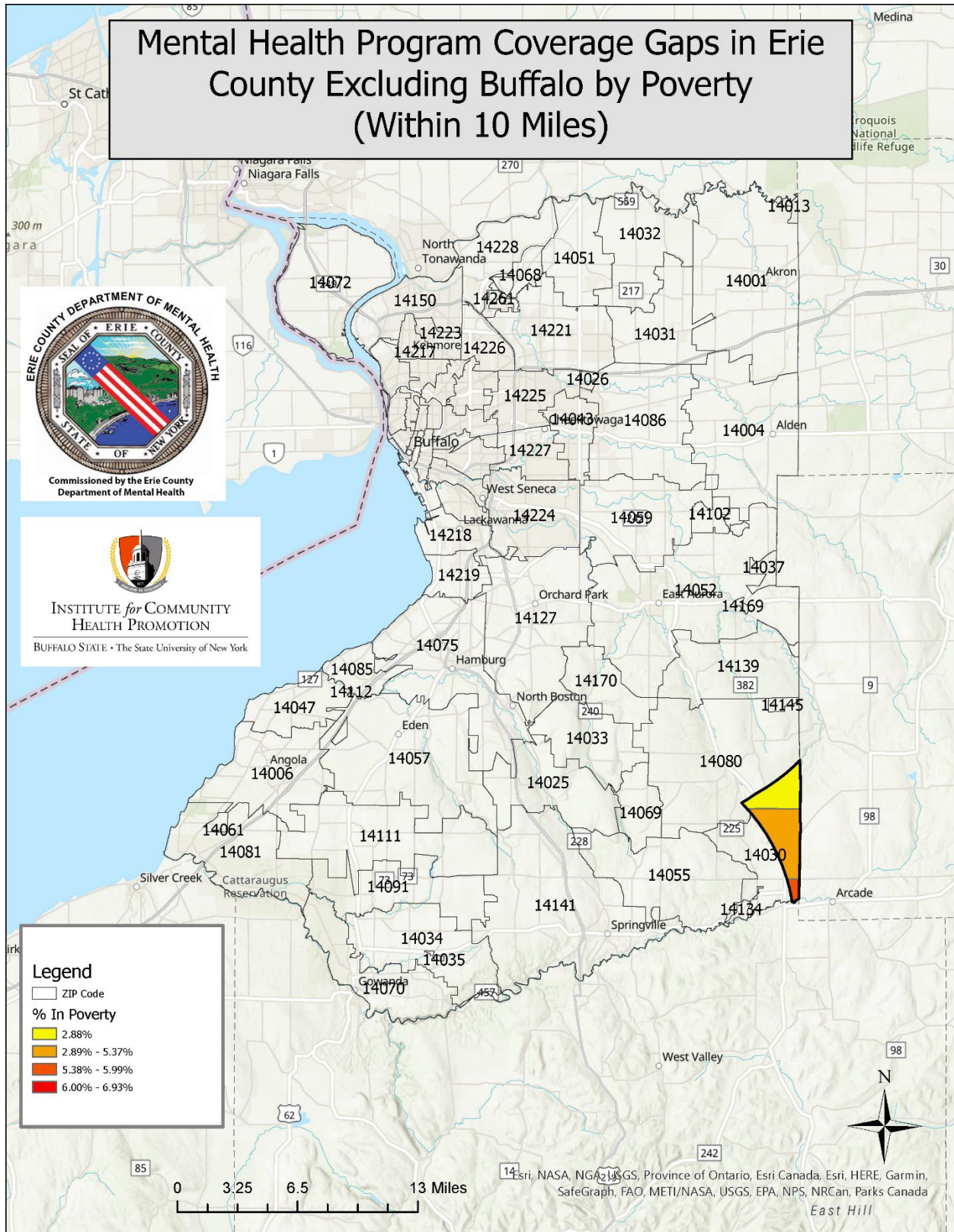
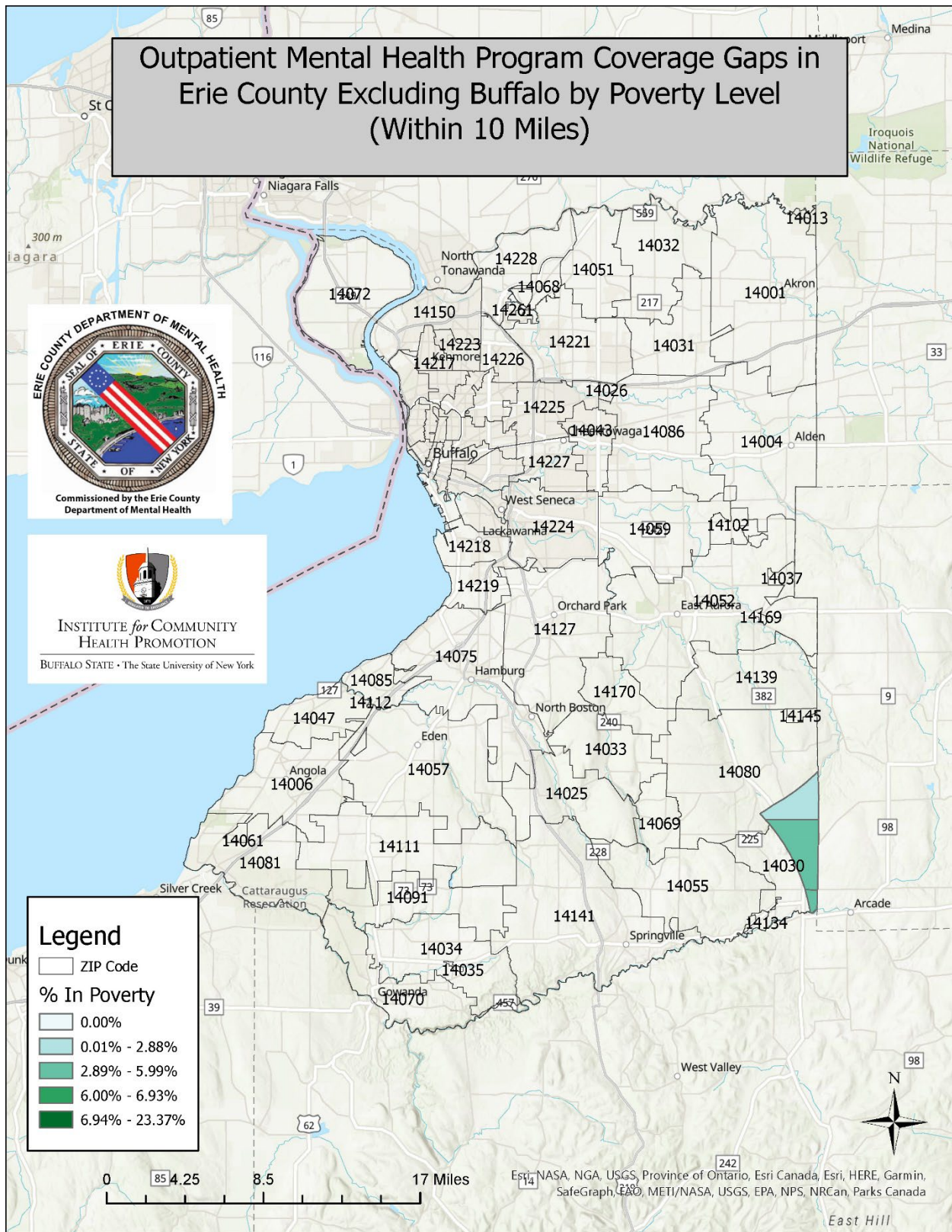








Figure 4.2



## Tables of Demographic Characteristics of Populations with/Without Treatment Coverage

**Table 1.1: Basic Demographic Profile for Populations in Mental Health Program Coverage (All Types, Within 1 Mile, City of Buffalo Only)**

	In Coverage	Not in Coverage
% Not White	60.31%	45.65%
% In Poverty	21.79%	26.80%
<b>Total Population</b>	<b>285,280</b>	<b>333</b>

**Table 1.2: Mental Health Program Coverage (All Types, Within 1 Mile, City of Buffalo Only): Percent of Each Race/Ethnicity Category as a Proportion of the Total Population In Coverage and Not in Coverage [Columns sum to 100%]**

	In Coverage	Not In Coverage	Total City of Buffalo Only Proportions
% Hispanic	12.64%	23.12%	12.65%
% White	39.69%	54.35%	39.71%
% Black	35.21%	15.32%	35.19%
% American Indian or Alaska Native	0.49%	0.90%	0.49%
% Asian	7.50%	1.20%	7.50%
% Hawaiian Native or Pacific Islander	0.04%	0.00%	0.04%
% Other Races	0.49%	0.30%	0.49%
% Multiple Races	3.94%	4.80%	3.95%
<b>Total</b>	<b>100%</b>	<b>100%</b>	<b>100%</b>

**Table 1.3: Mental Health Program Coverage (All Types, Within 1 Mile, City of Buffalo Only):** Percent of In Coverage and Not in Coverage Groups as a Proportion of the Total Population in Each Race/Ethnicity Category [Rows sum to 100%]

	<b>Percent Within Race/Ethnicity In Coverage</b>	<b>Percent Within Race/Ethnicity Not in Coverage</b>	<b>Total</b>
<b>% Hispanic</b>	99.84%	0.16%	<b>100%</b>
<b>% White</b>	99.95%	0.05%	<b>100%</b>
<b>% Black</b>	99.78%	0.22%	<b>100%</b>
<b>% American Indian or Alaska Native</b>	99.98%	0.02%	<b>100%</b>
<b>% Asian</b>	100.00%	0.00%	<b>100%</b>
<b>% Hawaiian Native or Pacific Islander</b>	99.93%	0.07%	<b>100%</b>
<b>% Other Races</b>	99.86%	0.14%	<b>100%</b>
<b>% Multiple Races</b>	99.88%	0.12%	<b>100%</b>
<b>Total Population</b>	<b>99.79%</b>	<b>0.21%</b>	<b>100%</b>



**Table 2.1: Basic Demographic Profile for Populations in Outpatient Mental Health Program Coverage (Within 1 Mile, City of Buffalo)**

	In Coverage	Not in Coverage
<b>% Not White</b>	60.29%	60.31%
<b>% In Poverty</b>	21.72%	28.45%
<b>Total Population</b>	<b>285,094</b>	<b>519</b>

**Table 2.2: Outpatient Mental Health Program Coverage (Within 1 Mile, City of Buffalo): Percent of Each Race/Ethnicity Category as a Proportion of the Total Population In Coverage and Not in Coverage [Columns sum to 100%]**

	In Coverage	Not in Coverage	Total City of Buffalo Only Proportions
<b>% Hispanic</b>	12.64%	16.57%	12.65%
<b>% White</b>	39.71%	39.69%	39.71%
<b>% Black</b>	35.20%	26.59%	35.19%
<b>% American Indian or Alaska Native</b>	0.49%	0.58%	0.49%
<b>% Asian</b>	7.49%	9.63%	7.50%
<b>% Hawaiian Native or Pacific Islander</b>	0.04%	0.19%	0.04%
<b>% Other Races</b>	0.49%	0.39%	0.49%
<b>% Multiple Races</b>	3.94%	6.36%	3.95%
<b>Total</b>	<b>100%</b>	<b>100%</b>	<b>100%</b>

**Table 2.3: Outpatient Mental Health Program Coverage (Within 1 Mile, City of Buffalo):** Percent of In Coverage and Not in Coverage Groups as a Proportion of the Total Population in Each Race/Ethnicity Category [Rows sum to 100%]

	<b>Percent Within Race/Ethnicity In Coverage</b>	<b>Percent Within Race/Ethnicity Not in Coverage</b>	<b>Total</b>
<b>% Hispanic</b>	99.82%	0.18%	<b>100%</b>
<b>% White</b>	99.86%	0.14%	<b>100%</b>
<b>% Black</b>	99.78%	0.22%	<b>100%</b>
<b>% American Indian or Alaska Native</b>	99.77%	0.23%	<b>100%</b>
<b>% Asian</b>	99.09%	0.91%	<b>100%</b>
<b>% Hawaiian Native or Pacific Islander</b>	99.86%	0.14%	<b>100%</b>
<b>% Other Races</b>	99.71%	0.29%	<b>100%</b>
<b>% Multiple Race</b>	99.82%	0.18%	<b>100%</b>
<b>Total Population</b>	<b>99.76%</b>	<b>0.24%</b>	<b>100%</b>

**Table 3.1: Basic Demographic Profile for Populations in Mental Health Program Coverage (All Types, Within 10 Miles, Erie County Excluding Buffalo)**

	In Coverage	Not in Coverage
% Not White	16.27%	4.74%
% In Poverty	6.13%	4.39%
<b>Total Population</b>	<b>685,298</b>	<b>1,393</b>

**Table 3.2: Mental Health Program Coverage (All Types, Within 10 Miles, Erie County Excluding Buffalo): Percent of Each Race/Ethnicity Category as a Proportion of the Total Population In Coverage and Not in Coverage [Columns sum to 100%]**

	In Coverage	Not in Coverage	Total Erie County Excluding Buffalo Proportions
% Hispanic	3.68%	1.01%	3.68%
% White	83.73%	95.26%	83.75%
% Black	4.89%	0.65%	4.88%
% American Indian or Alaska Native	0.50%	0.36%	0.50%
% Asian	3.74%	0.29%	3.73%
% Hawaiian Native or Pacific Islander	0.01%	0.00%	0.01%
% Other Races	0.28%	0.07%	0.28%
% Multiple Races	3.16%	2.37%	3.16%
<b>Total</b>	<b>100%</b>	<b>100%</b>	<b>100%</b>

**Table 3.3: Mental Health Program Coverage (All Types, Within 10 Miles, Erie County Excluding Buffalo):** Percent of In Coverage and Not in Coverage Groups as a Proportion of the Total Population in Each Race/Ethnicity Category [Rows sum to 100%]

	<b>Percent Within Race/Ethnicity In Coverage</b>	<b>Percent Within Race/Ethnicity Not in Coverage</b>	<b>Total</b>
<b>% Hispanic</b>	99.94%	0.06%	<b>100%</b>
<b>% White</b>	99.77%	0.23%	<b>100%</b>
<b>% Black</b>	99.97%	0.03%	<b>100%</b>
<b>% American Indian or Alaska Native</b>	99.85%	0.15%	<b>100%</b>
<b>% Asian</b>	99.98%	0.02%	<b>100%</b>
<b>% Hawaiian Native or Pacific Islander</b>	100.00%	0.00%	<b>100%</b>
<b>% Other Races</b>	99.95%	0.05%	<b>100%</b>
<b>% Multiple Races</b>	99.85%	0.15%	<b>100%</b>
<b>Total Population</b>	<b>99.80%</b>	<b>0.20%</b>	<b>100%</b>



**Table 4.1: Basic Demographic Profile for Populations in Outpatient Mental Health Program Coverage (Within 10 Miles, Erie County Excluding Buffalo)**

	In Coverage	Not in Coverage
<b>% Not White</b>	16.27%	4.74%
<b>% In Poverty</b>	6.13%	4.39%
<b>Total Population</b>	<b>685,298</b>	<b>1,393</b>

**Table 4.2: Outpatient Mental Health Program Coverage (Within 10 Miles, Erie County Excluding Buffalo): Percent of Each Race/Ethnicity Category as a Proportion of the Total Population In Coverage and Not in Coverage [Columns sum to 100%]**

	In Coverage	Not in Coverage	Total Erie County Excluding Buffalo Proportions
<b>% Hispanic</b>	3.68%	1.01%	3.68%
<b>% White</b>	83.73%	95.26%	83.75%
<b>% Black</b>	4.89%	0.65%	4.88%
<b>% American Indian or Alaska Native</b>	0.50%	0.36%	0.50%
<b>% Asian</b>	3.74%	0.29%	3.73%
<b>% Hawaiian Native or Pacific Islander</b>	0.01%	0.00%	0.01%
<b>% Other Races</b>	0.28%	0.07%	0.28%
<b>% Multiple Races</b>	3.16%	2.37%	3.16%
<b>Total</b>	<b>100%</b>	<b>100%</b>	<b>100%</b>

**Table 4.3: Outpatient Mental Health Program Coverage (Within 10 Miles, Erie County Excluding Buffalo):** Percent of In Coverage and Not in Coverage Groups as a Proportion of the Total Population in Each Race/Ethnicity Category [Rows sum to 100%]

	<b>Percent Within Race/Ethnicity In Coverage</b>	<b>Percent Within Race/Ethnicity Not in Coverage</b>	<b>Total</b>
<b>% Hispanic</b>	99.77%	0.23%	<b>100%</b>
<b>% White</b>	99.97%	0.03%	<b>100%</b>
<b>% Black</b>	99.85%	0.15%	<b>100%</b>
<b>% American Indian or Alaska Native</b>	99.98%	0.02%	<b>100%</b>
<b>% Asian</b>	100.00%	0.00%	<b>100%</b>
<b>% Hawaiian Native or Pacific Islander</b>	99.95%	0.05%	<b>100%</b>
<b>% Other Races</b>	99.85%	0.15%	<b>100%</b>
<b>% Multiple Races</b>	99.80%	0.20%	<b>100%</b>
<b>Total Population</b>	<b>99.94%</b>	<b>0.06%</b>	<b>100%</b>

## Mental Health Racial Equity Analysis Results

The results of these analyses present evidence of differences in demographic characteristics for populations in the county that fall inside and outside of the catchment areas for treatment program locations. There are several limitations for these analyses, most notably that they do not reflect the availability of telehealth and remote service delivery, they are restricted to a Euclidean (straight-line) distance measure to capture the physical access to the system locations, and they do not reflect the variable levels of transportation and economic access to these resources for the populations throughout the county.

- City of Buffalo Program Coverage
  - All Programs (Figures 1.1, 1.2; Tables 1.1, 1.2, 1.3)
    - Nearly all of the City of Buffalo has access to mental health treatment programs within 1 mile
    - Notable gaps in access occur in the western part of South Buffalo near the Outer Harbor and parts of the First Ward
    - Examining the characteristics of the overall distribution of the population inside and outside of access, we find that there is an equitable distribution of programs in the City of Buffalo
      - Hispanic populations share of the total is higher outside of access (23.12%) compared to inside of coverage (12.64%)
      - The percentage in poverty is also slightly higher outside of access (26.80%) compared to inside (21.79%)
    - Most other non-White demographic groups are similarly represented between inside and outside of access groupings or these groups have lower proportional representation in the outside of access group
  - Outpatient Only (Figures 2.1, 2.2; Tables 2.1, 2.2, 2.3)
    - Nearly all of the City of Buffalo has access to outpatient mental health treatment programs within 1 mile
    - Gaps are the same as overall coverage as such most of the population is covered with the same small disparities.
- Erie County Excluding Buffalo Program Coverage
  - All Programs (Figures 3.1, 3.2; Tables 3.1, 3.2, 3.3)
    - The vast majority of the county excluding Buffalo has access to mental health treatment programs within 10 miles
    - The coverage area has improved slightly since 2022
    - A notable gap in access occurs in a slice across the southeastern edge of the county near Holland
    - The gap highlights an area of the county that is largely rural though smaller populations centers within these areas, Holland (14080), and Chaffee (14030) show some concentration of minority populations and those in poverty
    - When examining the characteristics of the overall distribution of the population inside and outside of access, we find that there is an equitable distribution of programs in the county excluding Buffalo

- Nearly all racial and ethnic minority groups have proportionally better representation in the in-coverage group compared to those outside of coverage
- The population outside of access is exceedingly small (1,393), representing less than 0.25% of the population of the county outside of the City of Buffalo
- Additionally, populations outside of access have slightly higher rates of poverty status compared to those inside of access
- Outpatient Only (Figures 4.1, 4.2; Tables 4.1, 4.2, 4.3)
  - The vast majority of the county excluding Buffalo has access to outpatient mental health treatment programs within 10 miles
  - This mirrors the overall coverage as such the small gaps present in overall coverage are present with outpatient services